

Zone 8 Regionalisation Pilot

Forming Rotary Community Groups
September 2023



Regionalisation
Pilot

Jyoti, Rotarian since 2016.



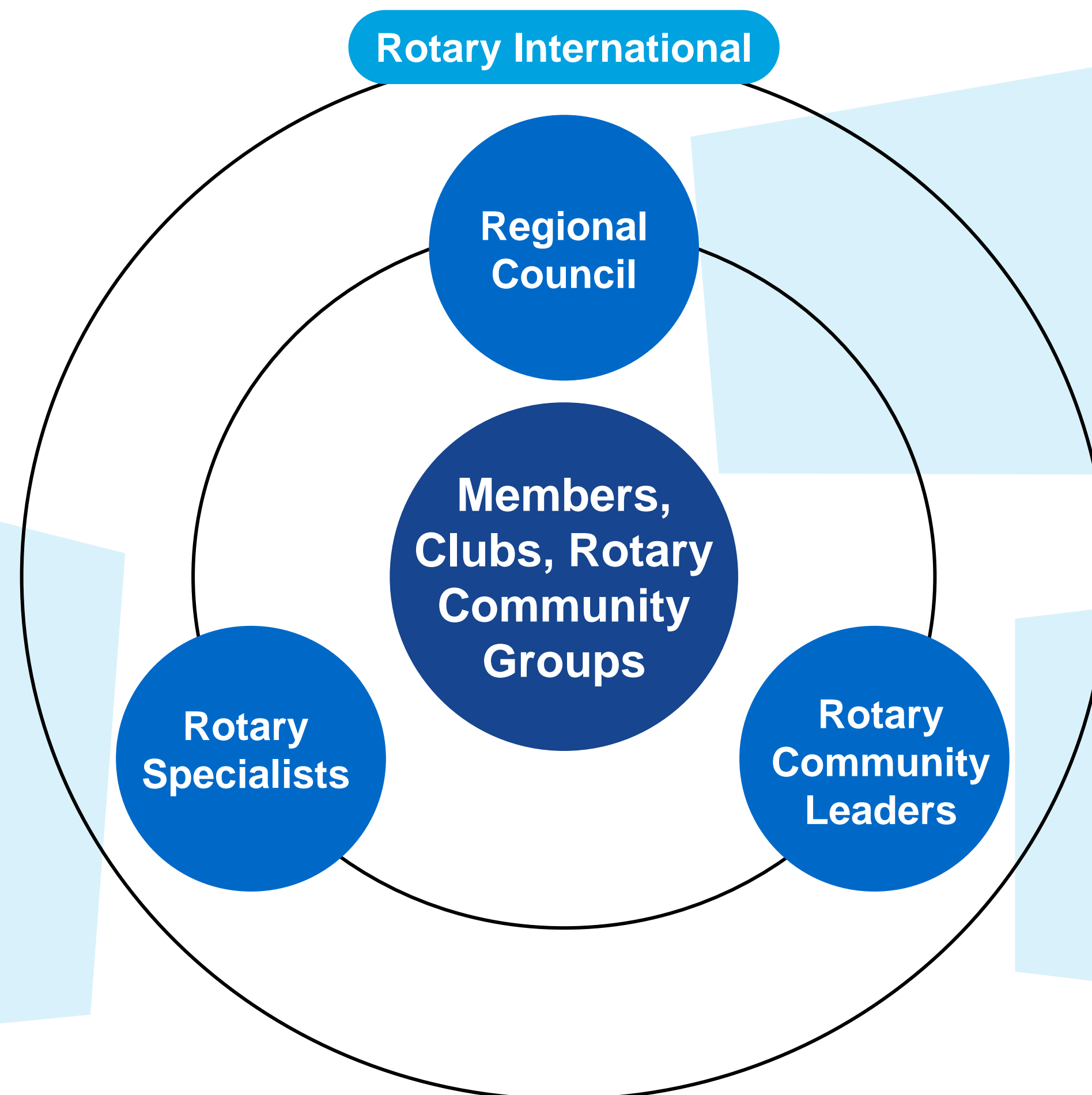
What this presentation covers

- Regionalisation Pilot – Recap
- Rotary Community Groups – What are they?
- Rotary Community Leaders – What is their role?
- How will the Rotary Community Groups be formed?
- How will the Rotary Community Leaders be elected?
- FAQs
- Indicative timeline

Regionalisation Pilot - Recap

Access to expertise

- Problem solving (e.g. conflict resolution)
- Governance and administration (e.g. insurance)
- Rotary programs (e.g. RYLA)
- Development (e.g. membership, marketing, event management, using collaboration software, strategic planning, etc.)



New leadership and governance body for Zone 8

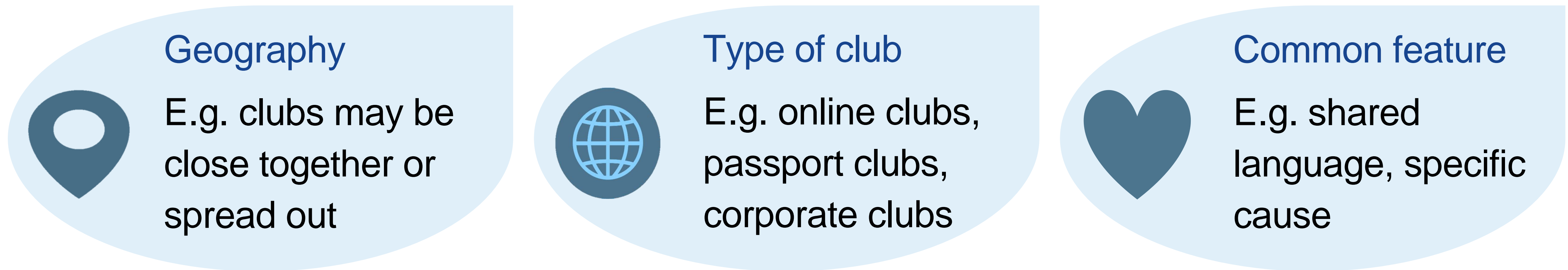
- Grow Rotary
- One voice – partnerships, public image
- Impact – Zone-wide projects
- Efficiency – reduced duplication, technology, etc.

New level and type of club support

- Facilitate collaboration – increasing community impact, profile of Rotary, membership growth and experience
- Provide and access support for clubs and Rotary Community Groups

Rotary Community Groups (RCGs) – What are they?

- A new way of grouping clubs based on commonalities such as:



- RCGs can meet in person, online or a combination of both, and choose how often they meet
- Clubs can also nominate a secondary grouping that will operate in online networks across the Zone e.g. environment, youth, DEI, etc.

Rotary Community Leaders (RCLs) – What is their role?

Each RCG will elect their own RCL, who will:

1. Facilitate RCGs to thrive and grow:

- Establish larger scale partnerships
- Increase community impact
- Build a higher public profile
- Attract new club members
- Increase club member engagement and satisfaction

2. Provide or access support for RCGs and individual clubs:

- Problem-solving
- Governance and administration
- Rotary programs
- Development

Please note that The Rotary Foundation will remain with Districts

How will Rotary Community Groups (RCGs) be formed?

- Clubs will tell us how they want to be grouped via the Club Preferences form
- We will then work with District leaders to determine the best groupings for that District, accommodating club preferences as much as possible
 - Where that's not possible, we'll work with the clubs involved to discuss available option/s

How will Rotary Community Groups (RCGs) be formed?

- Each club's President or Secretary will complete **one** Club Preferences form on behalf of their club
- A club's President or Board doesn't decide for the club
- The responses in the form need to reflect the **majority view** of club members
- It is expected that clubs will discuss/workshop the questions in the form together

Questions in the Club Preferences Form



- What are we most passionate about?
- What are our biggest strengths and challenges?
- What do we imagine our club could achieve with increased support and collaboration?
- What is our preferred primary way of being grouped with other clubs?
- Are we interested in being part of a secondary grouping? If so, based on what shared interest?

How will Rotary Community Leaders (RCLs) be elected?

- Once RCGs are formed, they will meet to discuss:
 - their vision
 - what leadership and support they will need
 - how and when they will meet
- The outcomes of this discussion will be documented and circulated to all members, and will supplement the position description for their RCL
- Once this is complete, nominations for RCLs will open
- Each club in an RCG will submit **one preferential vote** to elect their RCL

FAQs

Q. Is there a minimum and/or maximum number of clubs in each Rotary Community Group?

No, but we envisage most groups will have between 12 and 25 clubs. However, there will be exceptions.

Q. If my club becomes part of a large Rotary Community Group, we will get less support than we do now?

No. Rotary Community Groups are designed to enhance the existing support available to clubs. Your Rotary Community Leader will work closely with you to increase your community impact, raise Rotary's profile, attract members, and enhance member satisfaction.

Q. What if a club doesn't want to join a Rotary Community Group?

All clubs will be allocated to a Rotary Community Group and have a Rotary Community Leader who will support them if and as needed. It is an important principle of the Pilot that no club is left behind. However, clubs are autonomous and can choose how much they participate in their group.

Q. Can my club be in a Rotary Community Group with neighbouring clubs in another District?

Yes. All clubs will remain in their Districts, but the clubs within a Rotary Community Group can span more than one District. In such cases, their Rotary Community Leader would work closely with the District Governors involved.

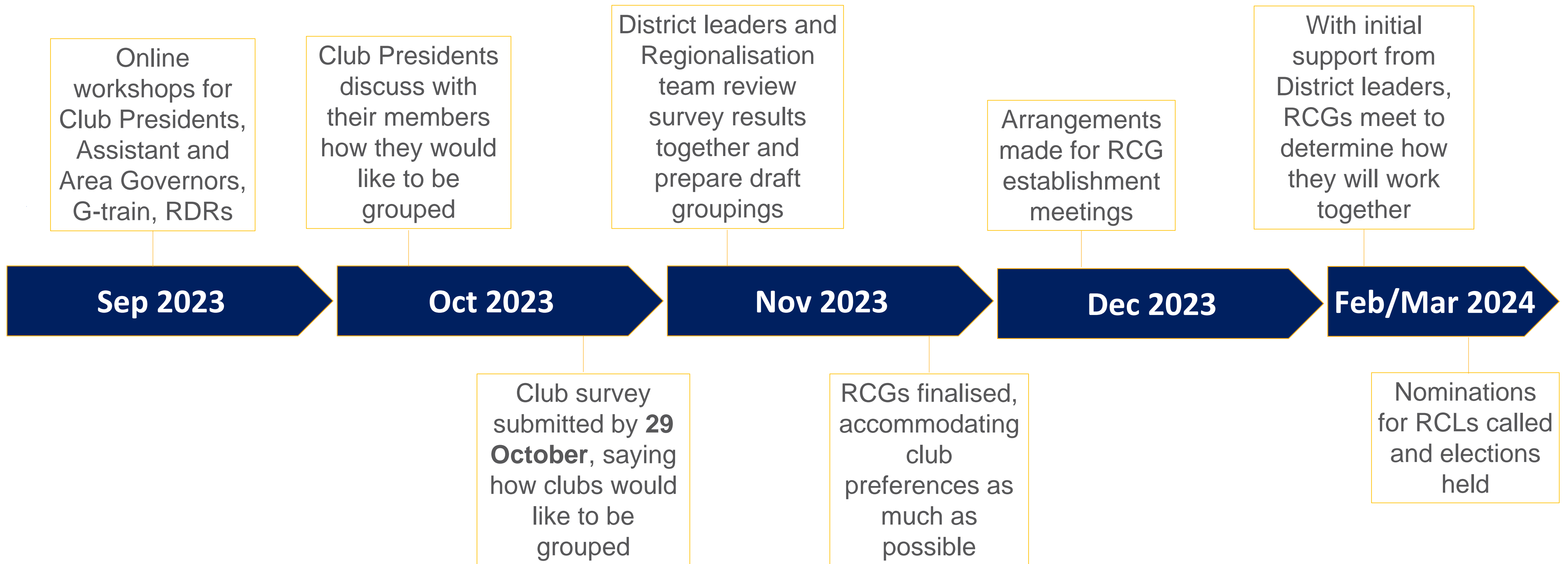
Q. What if my club doesn't want to change the group/cluster/area they are in now?

You can let us know if you would prefer to be grouped with specific clubs in the club preference form, and we will do our best to accommodate club preferences. However, this is an opportunity to try a new way of operating and enable clubs to make a bigger difference.

Q. Will we still have District Governors?

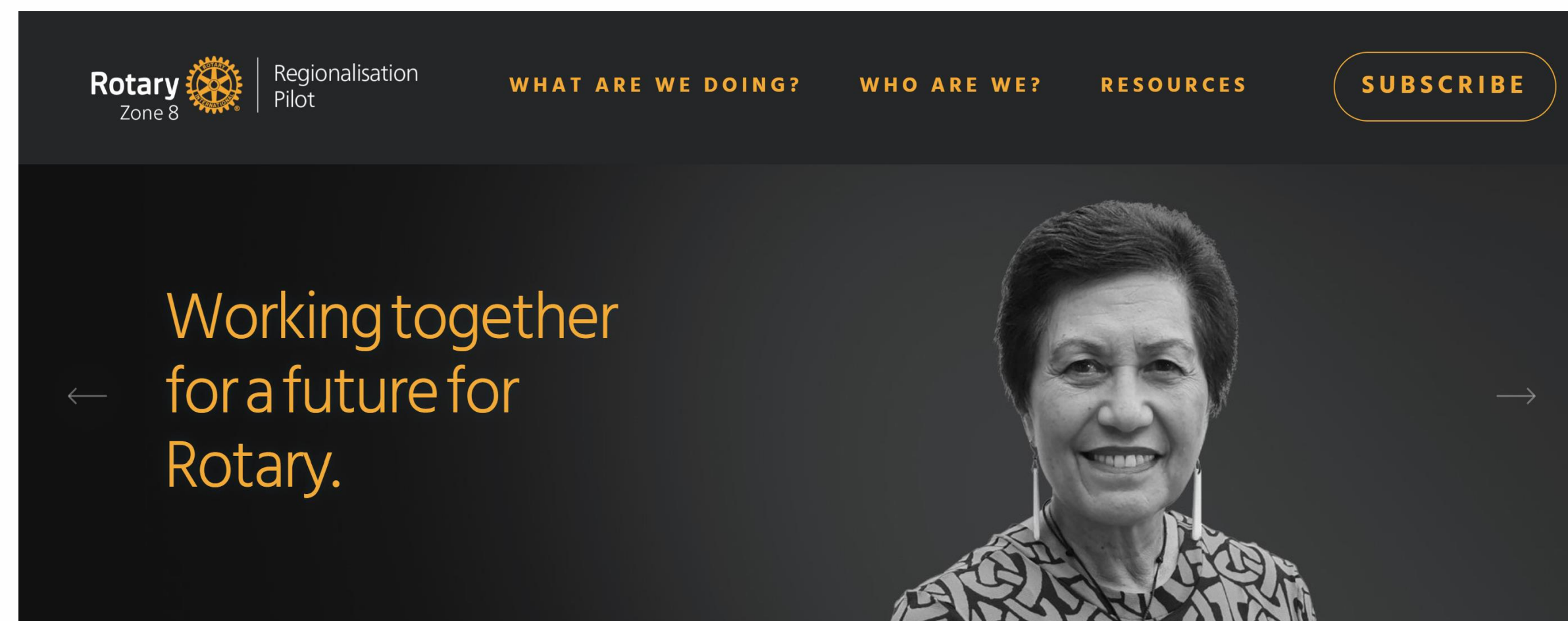
Yes. Rotary Community Leaders and District Governors will liaise collaboratively, with a focus on unified support for clubs and members.

Rotary Community Groups (RCGs) and Leaders (RCLs) indicative timeline



For more information

The *Creating Tomorrow* website is being updated regularly. For more information on the latest progress of the Regionalisation Pilot, visit CreatingTomorrowRotary.org



Latest updates.